

LUXURY GRILLS AND ACCESSORIES





THE TWIN EAGLES DIFFERENCE

Twin Eagles Heritage	4
5-Part Grilling System	6

GRILLS

C Series Gas Grills	8
Eagle One Gas Grills	12
Wood-Fired Pellet Grills	16
Freestanding Grill Bases	20
Grill Accessories	21

COOKING ACCESSORIES

Teppanyaki	22
Side Burner Combo	23
Power Burner	24
Side Burner	25

ACCESS DOORS AND DRAWERS

Doors	26
Drawers	27
Warming Drawers	28
Dry Storage	29

BAR ACCESSORIES

Beverage Centers	30
Cooler / Sink	31

OUTDOOR REFRIGERATION

Refrigerators	32
Ice Maker	33

HEATING AND VENTILATION

Outdoor Heaters	34
Ventilation	34

SPECIFICATIONS

Cutout Dimensions	36
-------------------	----



PERFORMANCE ENGINEERED

Our founder, Dante Cantal, instilled in Twin Eagles an obsession with performance and results. Over decades of experience as a gas engineer, Dante mastered his craft designing and engineering cooking equipment for the most demanding chefs. Twin Eagles exclusive 5-Part Grilling System is a testament to his obsession. We invite you to experience the difference. Perfect results are at your fingertips.

5-PART GRILLING SYSTEM

Perfect heat production, delivery, and retention with components designed and engineered for uncompromising performance.

- Preheats faster
- Reaches higher temperatures
- Distributes heat more evenly
- Offers complete control
- Uses less gas



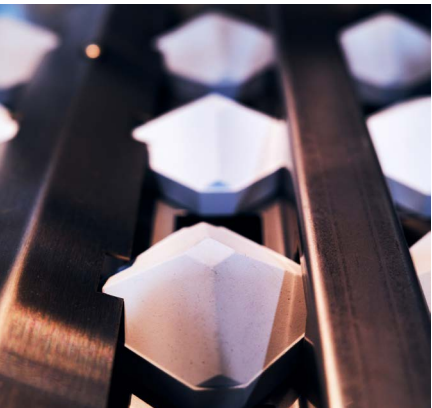
1. DRAFTING

- Oversized louvered openings allow for significant fresh air intake
- Keeps heat above the burners with accelerated movement to the cooking surface
- Eliminates stress to the burners from heat, #1 cause of burner fatigue



2. DIRECT HEAT

- Supplies the intense direct heat needed for searing and grilling
- Even spacing between the briquettes allows direct heat to rise uniformly across the grilling surface
- Preheats your grill faster
- Minimizes gas use



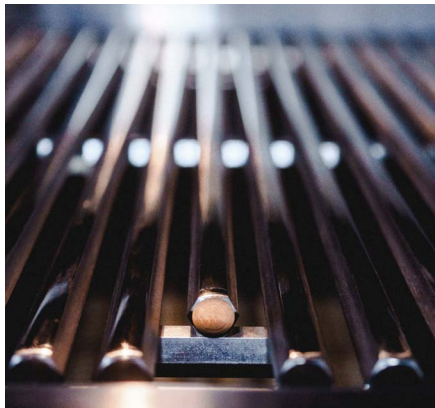
3. RADIANT HEAT

- High-grade ceramic briquettes distribute radiant heat evenly
- Channels in the tray allow briquettes to absorb heat quickly and efficiently
- Specially designed shape, distributes heat from the top and sides of each briquettes
- Even distribution of heat across the entire cooking surface



4. ZONE GRILLING

- Dividers between burners create zones to maximize your temperature control
- Control the temperature of each zone independently
- Allows you to grill a variety of foods at different heat intensity simultaneously
- Effectively operate one zone only for small volume grilling



5. HEXAGONAL GRATES

- Heavy, commercial-style 304 stainless steel grates deliver increased mass which result in better heat retention
- Flat cooking surface allows more food-to-grate contact transferring heat quicker
- Ensures evenly grilled food items
- Great grill marks and incredible longevity with a lifetime warranty





EXPERIENCE THE DIFFERENCE

The C Series Gas Grill is available in four sizes (30", 36", 42", 54"). Choose a model that includes an Integrated Rotisserie or opt for the Integrated Rotisserie plus Infrared Sear Zone. At the core of every Grill is our 5-Part Grilling System (see pg. 6). Engineered for uncompromising performance that will exceed your expectations.

Twin Eagles Dometic grills are designed, engineered, and manufactured in Southern California by a team of skilled engineers, experienced production professionals and master craftsmen.



Model shown: TEBQ42RS

Standard Features

- All 304 stainless steel, seamless heli-arc welded construction and signature hi-polished accents
- 25,000 BTU burners, constructed of 14 gauge 304 stainless steel with lifetime warranty
- Delivers consistently perfect results courtesy of the performance engineered 5-Part Grilling System
- 3/8 inch electro-polished hexagonal grates
- Illuminated glass control bezels with high to low Indigo blue indicators
- Concealed rotisserie motor provides consistent and uniform rotation of your meat (available without rotis)
- Easy-to-open hood assist system makes it easy to open the hood even when juggling plates of food
- Multi-position warming/cooking rack
- Grilling at night is simplified by the interior lights that illuminate with the motion-activated light switch
- Included smoker box for grilling versatility
- Utilize the optional charcoal tray accessory (TECT) for additional convenience and versatility
- Designed and manufactured in Southern California



Exclusive Control Illumination

Indigo blue control knob position indicator to allow easy burner monitoring



High Polished Accents

Stand apart with painstaking detail and residential refinement



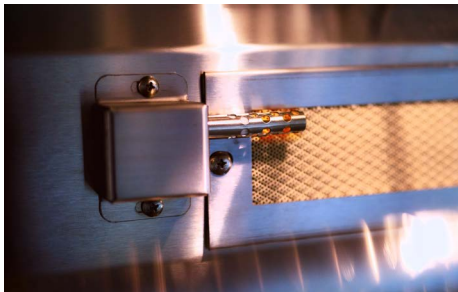
Integrated Rotisserie System

Fully concealed motor with 100lb. turning capacity and multi-position rod



Rotisserie Rod Storage

Conveniently stored in the leading edge of drip tray handle. Never lose it again!



Hot Surface Ignition

Getting started is quick and easy thanks to reliable ignition system



Handcrafted in the USA

Skilled craftsmen and high volume production capability

SELECT YOUR MODEL



C SERIES 30
30 inch outdoor gas grill

TEBQ30G-C TEBQ30R-C TEBQ30RS-C	(2) Main Burners (2) Main Burners and Rotisserie (1) Main Burners, (1) Sear Burner and Rotisserie
POWER REQUIREMENTS	Electrical Supply 120V, 60Hz, 4A Electrical Service 15 amp dedicated circuit Power Cord Length 5 feet Receptacle 3 prong grounding plug
GAS REQUIREMENTS	Natural Gas or Liquid Propane Gas Supply 3/4" ID line Gas Inlet 1/2" NPT female Total BTU 50,000-64,000
CLEARANCE REQUIREMENTS	Combustible Requires Insulating Jacket and Minimum 12" all around Non-Combustible Minimum 2.5" from back, Minimum 6" on sides
CUTOUT DIMENSIONS	Opening Width 28.25 inch Opening Height 11.75 inch Opening Depth 24.25 inch



C SERIES 36
36 inch outdoor gas grill

TEBQ36G-C TEBQ36R-C TEBQ36RS-C	(3) Main Burners (3) Main Burners and Rotisserie (2) Main Burners, (1) Sear Burner and Rotisserie
POWER REQUIREMENTS	Electrical Supply 120V, 60Hz, 4A Electrical Service 15 amp dedicated circuit Power Cord Length 5 feet Receptacle 3 prong grounding plug
GAS REQUIREMENTS	Natural Gas or Liquid Propane Gas Supply 3/4" ID line Gas Inlet 1/2" NPT female Total BTU 75,000-89,000
CLEARANCE REQUIREMENTS	Combustible Requires Insulating Jacket and Minimum 12" all around Non-Combustible Minimum 2.5" from back, Minimum 6" on sides
CUTOUT DIMENSIONS	Opening Width 34.25 inch Opening Height 11.75 inch Opening Depth 24.25 inch



C SERIES 42
42 inch outdoor gas grill

TEBQ42G-C TEBQ42R-C TEBQ42RS-C	(3) Main Burners (3) Main Burners and Rotisserie (2) Main Burners, (1) Sear Burner and Rotisserie
POWER REQUIREMENTS	Electrical Supply 120V, 60Hz, 4A Electrical Service 15 amp dedicated circuit Power Cord Length 5 feet Receptacle 3 prong grounding plug
GAS REQUIREMENTS	Natural Gas or Liquid Propane Gas Supply 3/4" ID line Gas Inlet 1/2" NPT female Total BTU 75,000-91,000
CLEARANCE REQUIREMENTS	Combustible Requires Insulating Jacket and Minimum 12" all around Non-Combustible Minimum 2.5" from back, Minimum 6" on sides
CUTOUT DIMENSIONS	Opening Width 40.25 inch Opening Height 11.75 inch Opening Depth 24.25 inch



C SERIES 54
54 inch outdoor gas grill

TEBQ54RS-C	(3) Main Burners, (1) Sear Burner and (2) Rotisserie Burners
POWER REQUIREMENTS	Electrical Supply 120V, 60Hz, 4A Electrical Service 15 amp dedicated circuit Power Cord Length 5 feet Receptacle 3 prong grounding plug
GAS REQUIREMENTS	Natural Gas or Liquid Propane Gas Supply 3/4" ID line Gas Inlet 1/2" NPT female Total BTU 100,000-128,000
CLEARANCE REQUIREMENTS	Combustible Requires Insulating Jacket and Minimum 12" all around Non-Combustible Minimum 2.5" from back, Minimum 6" on sides
CUTOUT DIMENSIONS	Opening Width 52.25 inch Opening Height 11.75 inch Opening Depth 24.25 inch





ULTRA-PREMIUM
EAGLE ONE



Model Shown:
TE1BQ54
Suitable for built-in or
free-standing application
(base sold separately)

UNCOMPROMISING LUXURY

The Eagle One offers a striking design profile and feature set made for the most discerning enthusiasts. Grill with confidence thanks to the ambient and exact control illumination, which provides a clear indication of temperature at the burner surface. Utilize TempTrack™ LEDs on the face of the grill for quick monitoring of overall grill temperature. Achieve beautiful sear marks with the oversized 1/2 inch chef-grade hexagonal grates and take advantage of the glass enclosed infrared rotisserie burner to expand your cooking capabilities.

EAGLE ONE GAS GRILLS

Luxury and performance grilling without compromise

The Eagle One is available in two sizes. Both the 42 inch and 54 inch include a Rotisserie with concealed motor and Infrared Sear Zone. Like our flagship C Series, the Eagle One is built around our 5-Part Grilling System. Staying true to our reputation of meticulous engineering, exceptional design and unparalleled performance. Its striking appearance speaks to the most discerning designers. Bold illumination characteristics allow you to manage and track temperature with accuracy and style. Its engineered performance solidifies its position as the exotic sports car of grills - being the envy of your neighbors.



Eagle One 42

42 inch outdoor gas grill

TE1BQ42RS	(2) Main Burners, (1) Sear Burner and Rotisserie
POWER REQUIREMENTS	Electrical Supply 120V, 60Hz, 4.4A Electrical Service 15 amp dedicated circuit Power Cord Length 5 feet Receptacle 3 prong grounding plug
GAS REQUIREMENTS	Natural Gas or Liquid Propane Gas Supply 3/4" ID line Gas Inlet 1/2" NPT female Total BTU 75,000-99,000
CLEARANCE REQUIREMENTS	Combustible Requires Insulating Jacket and Minimum 12" all around Non-Combustible Minimum 4.5" from back, Minimum 6" on sides
CUTOUT DIMENSIONS	Opening Width 40.25 inch Opening Height 11.75 inch Opening Depth 24.25 inch



Eagle One 54

54 inch outdoor gas grill

TE1BQ54RS	(3) Main Burners, (1) Sear Burner and (2) Rotisserie Burners
POWER REQUIREMENTS	Electrical Supply 120V, 60Hz, 4.4A Electrical Service 15 amp dedicated circuit Power Cord Length 5 feet Receptacle 3 prong grounding plug
GAS REQUIREMENTS	Natural Gas or Liquid Propane Gas Supply 3/4" ID line Gas Inlet 1/2" NPT female Total BTU 100,000-136,000
CLEARANCE REQUIREMENTS	Combustible Requires Insulating Jacket and Minimum 12" all around Non-Combustible Minimum 4.5" from back, Minimum 6" on sides
CUTOUT DIMENSIONS	Opening Width 52.25 inch Opening Height 11.75 inch Opening Depth 24.25 inch

Standard Features

- Includes all C Series premium features and the meticulously engineered 5-Part Grilling System + a suite of Super-Premium luxury amenities
- All 304 stainless steel, seamless heli-arc welded construction and signature hi-polished accents
- 25,000 BTU burners, constructed of 14 gauge 304 stainless steel with lifetime warranty
- Oversized 1/2 inch chef-grade electro-polished hexagonal grates cook food more evenly
- Elevated control panel illumination for easy monitoring of temperature while you entertain
- Beautiful black glass encased infrared rotisserie's burner(s) disperses heat in wide range, great for large roast or poultry on the rotisserie
- 2-position warming & cooking rack for indirect heating or keeping finished items warm
- Large capacity smoker box for grilling versatility
- Utilize the optional charcoal tray accessory (TECT) for additional convenience and versatility
- Fully insulated control panel protects the electronic controls and remains cool to the touch
- Designed and manufactured in Southern California



Exact Control

Indigo blue control knob position indicator



Ambient Illumination

Continuous control panel illumination



TempTrack™

Graduated LED temperature display



Integrated Rotisserie System

Fully concealed motor with 100lb. capacity



Black Glass Infrared Rotisserie Burner

Glass disperses heat evenly and efficiently



Chef Grade 1/2" Hexagonal Grates

For heat retention and food surface contact



WOOD-FIRED
PELLET GRILL

VERSATILITY AND CONVENIENCE

Getting started on your grill is easier than ever. Simply use the weatherproof touchscreen to set the temperature between 140°F to 725°F, or choose from one of several preprogrammed settings. Get real-time updates from onboard temperature probes using the

touchscreen control or convenient downloadable app, which allows control of the grill via WiFi. The included vaporizer plate, sear plate, and charcoal tray allow for incredible versatility to suit your preferred cooking method. Available with or without rotisserie.



PELLET GRILLS

Incredible versatility at the push of a button

The Wood-Fired Pellet Grill combines the ultimate in performance and convenience, setting the standard for luxury pellet grills. Accurate and versatile temperatures from 140° to 725°. Bake, Grill, Sear & Rotisserie Cooking features deliver amazing results at the push of a button. Large, sleek, weather proof touch screen control allows you to manually set temperatures or choose one of several preprogrammed food items with multiple levels of doneness - Select and cook.



Pellet Grill 36G

36 inch wood-fired pellet grill

TEPG36G	Standard Model
POWER REQUIREMENTS	Electrical Supply 120V, 60Hz, 4.3A Electrical Service 15 amp dedicated circuit Power Cord Length 5 feet Receptacle 3 prong grounding plug
CLEARANCE REQUIREMENTS	Combustible Requires Insulating Jacket and Minimum 12" all around Non-Combustible Minimum 3.25" from back, Minimum 6" on sides
CUTOUT DIMENSIONS	Opening Width 34.25 inch Opening Height 16.75 inch Opening Depth 24.25 inch



Pellet Grill 36R

36 inch wood-fired pellet grill and rotisserie

TEPG36R	Rotisserie Model
POWER REQUIREMENTS	Electrical Supply 120V, 60Hz, 5.04A Electrical Service 15 amp dedicated circuit Power Cord Length 5 feet Receptacle 3 prong grounding plug
CLEARANCE REQUIREMENTS	Combustible Requires Insulating Jacket and Minimum 12" all around Non-Combustible Minimum 3.25" from back, Minimum 6" on sides
CUTOUT DIMENSIONS	Opening Width 34.25 inch Opening Height 16.75 inch Opening Depth 24.25 inch

Standard Features

- Incredible temperature range from 140° to 725°
- All 304 stainless steel, seamless heli-arc welded construction and signature hi-polished accents
- Weather-proof touchscreen control panel with several pre-programmed recipes and easy manual temperature settings
- WiFi enabled with intuitive companion phone application available for iPhone or Android
- Maximum heat retention via double walled hood and braided 304 stainless steel insulating gasket
- Concealed heavy-duty rotisserie system with fully integrated 100lb turning capacity via unique chain-driven design
- 3-Tiered cooking racks (racks included)
- Internal halogen lights for nighttime cooking
- Variable speed fan
- Heavy duty 120V auger motor
- Removable burn pot for easy cleaning and maintenance
- Companion Pellet Storage Drawer available (TESD361-B)
- Designed and manufactured in Southern California



Extra-thick vaporizer plate
16 gauge stainless



Charcoal tray insert (included accessory)
Suitable for charcoal or lump wood



Sear plate insert (included accessory)
Grill with radiant and direct heat



Front loading pellet hopper
Easy access to load pellets (13lb capacity)



Dual trays for ash collection
Easy clean up and storage



Three temperature probes
Monitor temperature on multiple food items

FREESTANDING GRILL BASES



30 Inch Grill Base
Suitable for 30in Grill or Teppanyaki, Side Burner Combo



36 Inch Grill Base
Freestanding gas grill base with storage drawers



42 Inch Grill Base (shown with C Series)
Freestanding gas grill base with storage drawers



54 Inch Grill Base
Freestanding gas grill base with storage drawers



42 Inch Grill Base (shown with Eagle One)
Freestanding gas grill base with storage drawers



Pellet Grill Base
Freestanding gas grill base with storage drawers

GRILL ACCESSORIES



Power Burner Griddle
18 inch large griddle plate for power burner



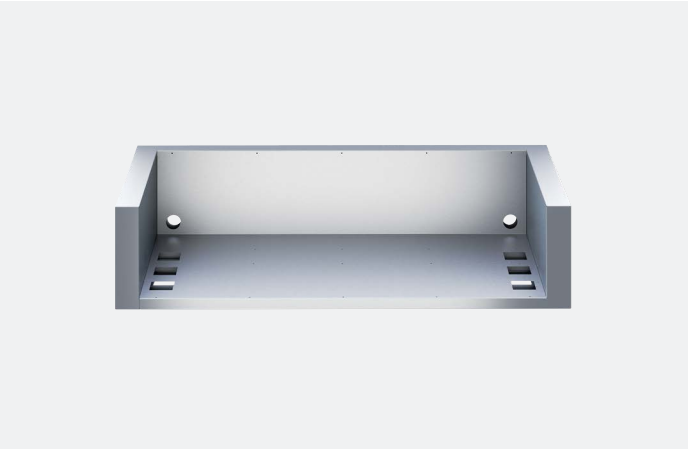
Gas Grill Griddle
12 inch griddle plate for gas grills



Freestanding Grill Vinyl Cover
Heavy duty outdoor grill protection



Built-In Grill Vinyl Cover
Heavy duty outdoor grill protection



Insulation Jacket
For combustible installations



Charcoal Tray
Suitable for charcoal or lump wood

COOKING ACCESSORIES

THERMASTATICALLY CONTROLLED FOR PREDICTABLE RESULTS



Teppanyaki

30 inch flat top gas griddle

- Stainless steel, solid 8mm thick surface
- Two independent thermostatically-controlled gas burners
- Total of 40,000 BTUs
- Heat on indicator lights
- Hot surface ignition with safety gas valve
- Stainless steel cover
- Exclusive Control Illumination

GENERAL	Model TETG30-C
POWER REQUIREMENTS	Electrical Supply 120V, 60Hz, 900W, 8A Electrical Service 15 amp dedicated circuit Power Cord Length 5 feet Receptacle 3 prong grounding plug
GAS REQUIREMENTS	Natural Gas or Liquid Propane Gas Supply 3/4" ID line Gas Inlet 1/2" NPT female Total BTU 40,000
CLEARANCE REQUIREMENTS	Combustible Requires Insulating Jacket and Minimum 12" all around Non-Combustible Minimum 1" all around
CUTOUT DIMENSIONS	Width 28.50 inch Height 11.50 inch Depth 24.25 inch



Side Burner Combo

30 inch gas griddle and double burner combo

- 20,000 BTU stainless steel griddle burner
- Griddle thermostat control with heat on indicator light
- Side burner includes two 17,500 BTU dual-ring sealed burners
- Stainless steel covers for both sides; griddle and burners
- Exclusive control illumination

GENERAL	Model TEBC30-C
POWER REQUIREMENTS	Electrical Supply 120V, 60Hz, 450W, 4A Electrical Service 15 amp dedicated circuit Power Cord Length 5 feet Receptacle 3 prong grounding plug
GAS REQUIREMENTS	Natural Gas or Liquid Propane Gas Supply 3/4" ID line Gas Inlet 1/2" NPT female Total BTU 55,000
CLEARANCE REQUIREMENTS	Combustible Requires Insulating Jacket and Minimum 12" all around Non-Combustible Minimum 1" all around
CUTOUT DIMENSIONS	Width 28.50 inch Height 11.50 inch Depth 24.25 inch

COOKING ACCESSORIES

HIGH PERFORMANCE OUTDOOR BURNERS



Power Burner

24 inch commerical grade burner

- Powerful 70,000 BTU burner with low simmer
- Reversible grate for large stockpots & commercial woks
- Oversized cast brass 2-ring burner
- Reliable hot surface ignition
- Stainless steel cover included
- Exclusive Control Illumination
- Griddle plate accessory available (Model TEGP18-PB)

GENERAL	Model TEPB24HG-C
POWER REQUIREMENTS	Electrical Supply 120V, 60 Hz, 2.2A Electrical Service 15 amp dedicated circuit Power Cord Length 5 feet Receptacle 3 prong grounding plug
GAS REQUIREMENTS	Natural Gas or Liquid Propane Gas Supply 3/4" ID line Gas Inlet 1/2" NPT female Total BTU 70,000
CLEARANCE REQUIREMENTS	Combustible Requires Insulating Jacket and Minimum 12" on all sides Non-Combustible Minimum 1" all around
CUTOUT DIMENSIONS	Width 22.00 inch Height 11.50 inch Depth 20.50 inch



Side Burner

13 inch Double Burner

- Two 17,500 BTU dual ring burners
- One-piece stainless steel "S" grate
- Built-in wind guard
- Stainless steel cover included
- Exclusive control illumination

GENERAL	Model TESB132-C
POWER REQUIREMENTS	Illumination 12V DC Ignition 9V Battery Operated
GAS REQUIREMENTS	Natural Gas or Liquid Propane Gas Supply 3/4" ID line Gas Inlet 1/2" NPT female Total BTU 35,000
CLEARANCE REQUIREMENTS	Clearance to combustibile surface: 12" all sides. For non-combustible installation only.
CUTOUT DIMENSIONS	Width 11.50 inch Height 10.00 inch Depth 24.25 inch

ACCESS DOORS AND DRAWERS

Single Access Door

Available in 18 or 24 inch

Keep your outdoor kitchen stocked with all of the necessary supplies. The soft-close single access door allows for versatile storage options, whether you need space to store your LP gas tank or utility storage to keep seasonings on hand. The entire stainless steel unit features a flush handle design and polished accents. With everything in one place, you'll be ready to cook outside from dawn to dusk.

- Soft closing feature avoids sudden slams
- 3 way adjustable concealed door hinges
- Flush handle design with high polished accents
- Available with left or right hinge
- 304 Stainless Steel construction



Double Access Doors

Available in 30, 36, 42 inch

Soft-close double access doors allow for space to store your LP gas tank or need access to plumbing. The entire stainless steel unit features a flush handle design and polished accents. With everything in one place, you'll be ready to cook outside from dawn to dusk.

- Soft-closing, three-way adjustable concealed door hinges
- Double-walled doors
- One-piece mounting frame for precision alignment
- Flush handle design with high-polished accents
- 304 Stainless Steel construction



Door and Drawer Combo

Available in 30, 36, 42 Inch Double Drawer

The soft-close access door reveals a roomy storage space. Two self-latching storage drawers have a large capacity for cooking supplies. The entire stainless steel unit features a flush handle design and polished accents.

- Soft-closing, three-way adjustable hinges
- Double-walled doors
- One-piece mounting frame
- High-polished accents
- Self latching, and 100 lbs. capacity, full extension drawer slides
- Extra deep drawers for oversized utensils
- 304 Stainless Steel construction



Storage Drawers

Available in 13 or 19 inch Double Drawer

Stay organized with our Storage Drawers. Available in 13 or 19 inch configurations, with two drawers. A shallow and deep drawer provide flexible options for items large and small. Self-latching with full extension slides, you'll have quick access to your cooking supplies and convenient storage when they're not in use.

- Self latching, 100 lbs. capacity, full extension slides
- Extra deep drawers for oversized utensils
- Superior welding and finish
- One-piece front frame for precision alignment
- Flush handle design with high-polished accents
- 304 Stainless Steel construction



Tall Trash Drawer

18 inch double or single trash drawer

The 18 inch trash drawer holds one or two larger capacity trash containers and has a full pullout drawer for easy access. Use one of the included containers for waste and the other for recycling.

- Holds larger capacity trash container (container included)
- Full pullout drawer for easy access (100 lbs. capacity)
- Flush handle design with high-polished accents
- 304 Stainless Steel construction



Single Storage Drawer

Available in 24, 30, 36 inch

Single drawer to keep all of your cooking equipment. Self-latching with full extension slides, you'll have quick access to your cooking supplies and convenient storage when they're not in use.

- Pair the 24 inch model with a power burner to store the optional griddle plate accessory or oversized utensils.
- 36 inch model is the ideal companion to the built-in pellet grill
- Self latching, 100 lbs. capacity, full extension slides
- One-piece front frame for precision alignment
- Flush handle design with high-polished accents
- 304 Stainless Steel construction



WARMING DRAWERS



Warming Drawer + Storage

42 inch temperature controlled drawer

- Four (4) steam pans designed for steam or dry warming
- Discrete thermostat control
- Heat ranges from 60° to 220° F (15° to 104° C)
- Approved for indoor and outdoor use
- Red indicator light when drawer in active

GENERAL	Model TEWD42C-C
POWER REQUIREMENTS	Electrical Supply 120V, 60 Hz, 450W, 4A Electrical Service 15 amp dedicated circuit Power Cord Length 5 feet
CUTOUT DIMENSIONS	Width 40.25 inch Height 19.375 inch



Warming Drawer

30 inch temperature controlled drawer

- Four (4) steam pans designed for steam or dry warming
- Discrete thermostat control
- Heat ranges from 60° to 220° F (15° to 104° C)
- Approved for indoor and outdoor use
- Red indicator light when drawer in active

GENERAL	Model TEWD30-C
POWER REQUIREMENTS	Electrical Supply 120V, 60 Hz, 450W, 4A Electrical Service 15 amp dedicated circuit Power Cord Length 5 feet
CUTOUT DIMENSIONS	Width 28.50 inch Height 10.00 inch

DRY STORAGE



36 Inch Dry Storage

Sealed pantry

- Perfect companion to the 36", 42" or 54" built-in grill
- 3 full extension drawers behind left-hand door
- Large open storage compartment behind right-hand door
- Overall dimensions: 36" W x 20.75" H

GENERAL	Model TEDS36-B
CUTOUT DIMENSIONS	Width 34.25 inch Height 19.00 inch



36 Inch Tall Dry Storage

Sealed pantry

- 36-inch tall cabinet sits just below counter height
- 4 full extension drawers behind left-hand door
- 1 fixed shelf and 2 full extension drawers behind right-hand door
- Overall dimensions: 36" W x 34" H

GENERAL	Model TEDS36T-B
CUTOUT DIMENSIONS	Width 34.25 inch Height 32.25 inch



BAR ACCESSORIES



Beverage Center

18 inch outdoor bar

- Three seperate cooling compartments
- Built in stainless steel bottle opener and towel ring
- 40 pound ice capacity
- Stainless steel sliding ice bin cover included

GENERAL	Model TEOB18-B
CUTOUT DIMENSIONS	Width 17.50 inch Height 9.75 inch Depth 24.25 inch



Beverage Center

30 inch outdoor bar

- Built in stainless sink
- Three seperate cooling compartments
- Built in stainless steel bottle opener and towel ring
- 40 pound ice capacity
- Stainless steel sliding ice bin cover included

GENERAL	Model TEOB30-B
CUTOUT DIMENSIONS	Width 28.50 inch Height 9.75 inch Depth 24.25 inch



Drop-In Cooler

24 inch beverage center, 25 lb capacity

- Accommodates up to 60 bottles and 25lbs of ice
- Removable/sliding condiment tray
- Removable lid with heavy-duty hinges
- Brass drain with plug

GENERAL	Model TEOC24D-B
CUTOUT DIMENSIONS	Width 22.75 inch Height 10.00 inch + drain Depth 22.75 inch



Outdoor Sink

24 inch stainless steel sink

- 9.5 inch depth from rim to base
- Integrated soap dispenser
- 3.5 inch stainless steel basket drain
- Cold (TEFC-KIT) or Hot/Cold (TEFHC-KIT) faucet sold separately
- Includes stainless steel cover

GENERAL	Model TEOS24-B
CUTOUT DIMENSIONS	Width 22.75 inch Height 9.75 inch + drain Depth 21.75 inch



OUTDOOR REFRIGERATION



Outdoor Refrigerator
24 inch stainless steel with solid door

- Energy star certified
- 5.3 cubic feet of storage
- Zero-clearance hinge
- Height adjustable, stainless-steel internal shelving
- Easy touch control panel and readout provides digital accuracy
- Door lock for added security

ELECTRICAL	Input Voltage 120V, 60Hz, 4A Rated Input Power 110 W Cord Length 6 feet Energy Star Certified Yes
REFRIGERATION	Ambient Temperature 50 °F to 100 °F Operational Temperature 34 °F to 72 °F Propellant Cyclopentane Refrigerant R600a
OVERALL DIMENSIONS	Width - in. 23.6" Height - in. (mm) 34"- 35" Depth - in. 25.4"
CUTOUT DIMENSIONS	Opening Width 24.25" Opening Height 34.25" - 35.25" Opening Depth 26"



Refrigerated Drawers
24 inch stainless steel refrigerated drawers

- Energy star certified
- 5.3 cubic feet of storage
- Extra smooth drawer slides allow full access to maximize storage capacity
- Internal storage racks for sorting chilled items
- Easy touch control panel and readout provides digital accuracy

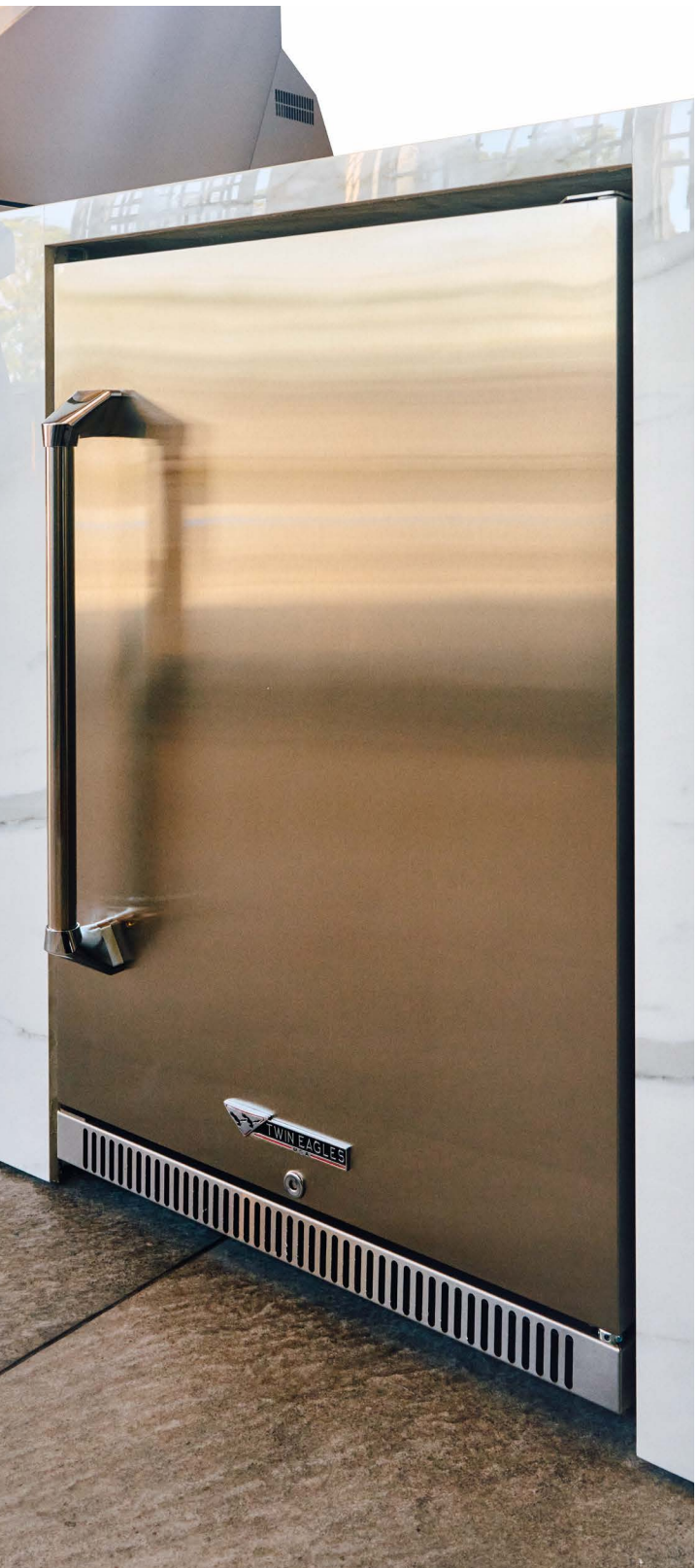
ELECTRICAL	Input Voltage 120V, 60Hz, 4A Rated Input Power 110 W Cord Length 6 feet Energy Star Certified Yes
REFRIGERATION	Ambient Temperature 50 °F to 100 °F Operational Temperature 34 °F to 72 °F Propellant Cyclopentane Refrigerant R600a
OVERALL DIMENSIONS	Width - in. 23.6" Height - in. (mm) 34"- 35" Depth - in. 25.4"
CUTOUT DIMENSIONS	Opening Width 24.25" Opening Height 34.25" - 35.25" Opening Depth 26"



Ice Maker
15 inch stainless steel clear ice machine

- Produces 55 lbs of top hat ice in 24 hours
- 22 lbs. of built-in ice storage capacity
- Front in, front out airflow
- Easily disassembled water circuit for easy cleaning
- Fewer moving parts for longer life

ELECTRICAL	Input Voltage 115V, 60Hz, 4A Cord Length 6 feet
REFRIGERATION	Ambient Temperature 45 °F to 100 °F Refrigerant R-134a
OVERALL DIMENSIONS	Width - in. 14.88" Height - in. (mm) 33.50" Depth - in. 24.35"
CUTOUT DIMENSIONS	Width 15.05 inch Height 34.00 inch Depth 24 inch



OUTDOOR HEATING AND VENTILATION

Gas Heater

48 inch gas heater

Extend your outdoor entertaining into the cool late evening – or even year-round – with our patented radiant gas heater powered by infrared technology. The wireless remote control allows you to adjust heat settings with ease. Enjoy exceptional heat coverage over a wide area and let the party last.

- Available in 48 inch length
- Two heat levels: low setting at 25,000 BTU and high at 37,000 BTU
- Wireless remote control (No wiring required)
- Spark ignition with 100% safety pilot
- Includes mounting brackets and gas hose
- AC Power adapter available



Electric Heater

Available in 39 or 61 inch

Our energy-efficient electric radiant heater maintains a warm, comfortable atmosphere on cool nights. Designed for installation at lower heights (6-8 feet), this heater maximizes heat where you need it most. We make the parabolic reflector of a special corrosive resistant alloy, an essential feature for humid climates or windy areas.

- Available in 39 or 61 inch sizes
- Energy efficient: 90% of input energy is converted directly to radiant heat
- Swivel mounting brackets allow 6” of clearance behind heater
- UL-approved
- For Indoor or Outdoor use
- Incremental control included
- Volts: 240, Watts: 2500, Amps: 10.4



Ventilation

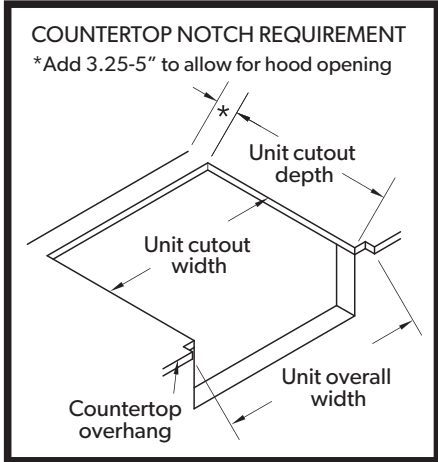
Available in 36”, 48”, 60”, blower motor sold separately

Safely remove excess smoke, odors, and grease to protect your outdoor kitchen area and guests. Our high-performance ventilation hood draws heat, steam, and grease away from your cooking area. Seamless, sophisticated design with our signature polished geometrical accents complements our grills and accessories. Available in 36 inch, 48 inch and 60 inch sizes.

- Easy to remove, dishwasher safe stainless steel baffle filters
- 3-speed ventilator control
- 2 halogen lamps with dual settings
- Seamless welded construction with high-polished accents
- Internal blower motor (model TEVI-120I) sold separately

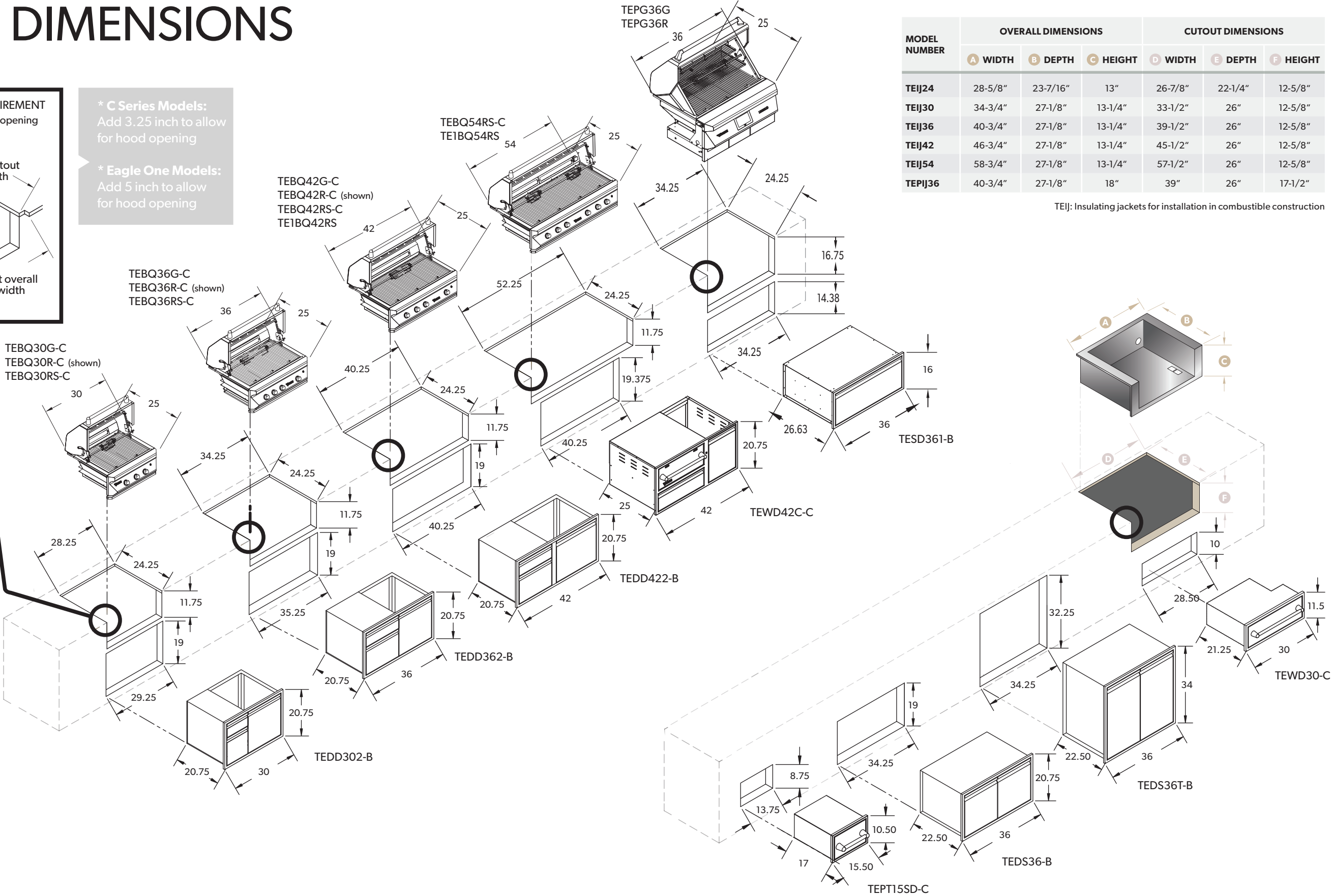


CUTOUT DIMENSIONS



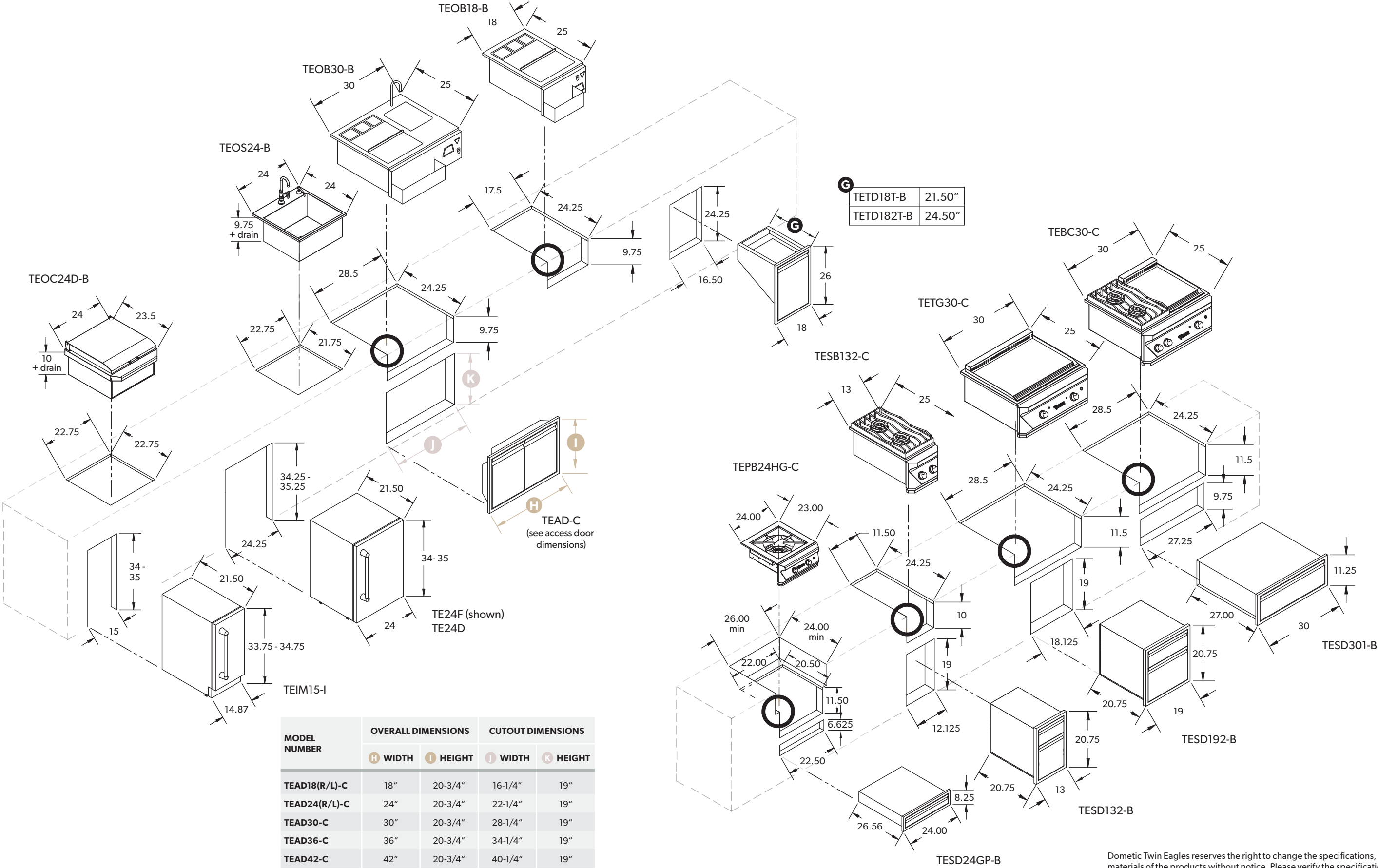
*** C Series Models:**
Add 3.25 inch to allow for hood opening

*** Eagle One Models:**
Add 5 inch to allow for hood opening



MODEL NUMBER	OVERALL DIMENSIONS			CUTOUT DIMENSIONS		
	A WIDTH	B DEPTH	C HEIGHT	D WIDTH	E DEPTH	F HEIGHT
TEIJ24	28-5/8"	23-7/16"	13"	26-7/8"	22-1/4"	12-5/8"
TEIJ30	34-3/4"	27-1/8"	13-1/4"	33-1/2"	26"	12-5/8"
TEIJ36	40-3/4"	27-1/8"	13-1/4"	39-1/2"	26"	12-5/8"
TEIJ42	46-3/4"	27-1/8"	13-1/4"	45-1/2"	26"	12-5/8"
TEIJ54	58-3/4"	27-1/8"	13-1/4"	57-1/2"	26"	12-5/8"
TE1IJ36	40-3/4"	27-1/8"	18"	39"	26"	17-1/2"

TEIJ: Insulating jackets for installation in combustible construction



Dometic Twin Eagles reserves the right to change the specifications, designs and materials of the products without notice. Please verify the specifications prior to finalizing your enclosures.



Twin Eagles Dometic
13259 East 166th Street
Cerritos, CA 90703
Tel 800 789 2206
twineagles.dometic.com

TWINEAGLES |  **DOMETIC**